

**RAB14 Antibody**  
**Purified Mouse Monoclonal Antibody (Mab)**  
**Catalog # AM8601b****Specification**

---

**RAB14 Antibody - Product Information**

Application	WB,E
Primary Accession	<a href="#">P61106</a>
Other Accession	<a href="#">Q5ZKU5</a> , <a href="#">Q91V41</a> , <a href="#">Q5R8Z8</a>
Reactivity	Human
Predicted	Chicken, Mouse
Host	Mouse
Clonality	monoclonal
Isotype	IgG1,k
Calculated MW	23897

**RAB14 Antibody - Additional Information****Gene ID** 51552**Other Names**

Ras-related protein Rab-14, RAB14

**Target/Specificity**

This RAB14 antibody is generated from a mouse immunized with a recombinant protein of human RAB14.

**Dilution**

WB~~1:2000

E~~Use at an assay dependent concentration.

**Format**

Purified monoclonal antibody supplied in PBS with 0.09% (W/V) sodium azide. This antibody is purified through a protein G column, followed by dialysis against PBS.

**Storage**

Maintain refrigerated at 2-8°C for up to 2 weeks. For long term storage store at -20°C in small aliquots to prevent freeze-thaw cycles.

**Precautions**

RAB14 Antibody is for research use only and not for use in diagnostic or therapeutic procedures.

**RAB14 Antibody - Protein Information****Name** RAB14 ([HGNC:16524](#))

**Function** The small GTPases Rab are key regulators of intracellular membrane trafficking, from the formation of transport vesicles to their fusion with membranes. Rabs cycle between an

inactive GDP-bound form and an active GTP-bound form that is able to recruit to membranes different set of downstream effectors directly responsible for vesicle formation, movement, tethering and fusion (PubMed:[22595670](#)). Involved in membrane trafficking between the Golgi complex and endosomes during early embryonic development (By similarity). Regulates the Golgi to endosome transport of FGFR-containing vesicles during early development, a key process for developing basement membrane and epiblast and primitive endoderm lineages during early postimplantation development. May act by modulating the kinesin KIF16B-cargo association to endosomes (By similarity). Regulates, together with its guanine nucleotide exchange factor DENND6A, the specific endocytic transport of ADAM10, N-cadherin/CDH2 shedding and cell-cell adhesion (PubMed:[22595670](#)). Mediates endosomal tethering and fusion through the interaction with RUFY1 and RAB4B (PubMed:[20534812](#)). Interaction with RAB11FIP1 may function in the process of neurite formation (PubMed:[26032412](#)).

### Cellular Location

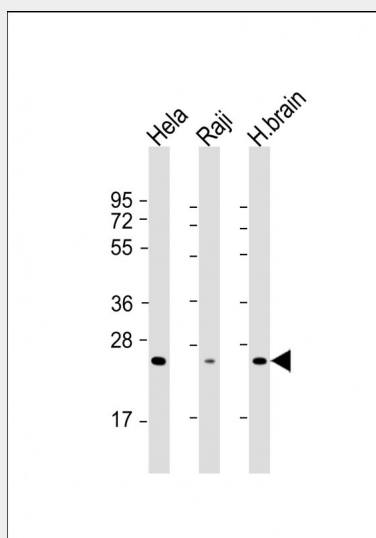
Recycling endosome. Early endosome membrane; Lipid-anchor; Cytoplasmic side. Golgi apparatus membrane; Lipid-anchor; Cytoplasmic side. Golgi apparatus, trans-Golgi network membrane; Lipid-anchor; Cytoplasmic side. Cytoplasmic vesicle, phagosome. Cytoplasmic vesicle. Note=Recruited to recycling endosomes by DENND6A (PubMed:22595670). Recruited to phagosomes containing S.aureus or M.tuberculosis (PubMed:21255211). Colocalizes with RAB11FIP1 on punctate vesicles (PubMed:26032412).

### RAB14 Antibody - Protocols

Provided below are standard protocols that you may find useful for product applications.

- [Western Blot](#)
- [Blocking Peptides](#)
- [Dot Blot](#)
- [Immunohistochemistry](#)
- [Immunofluorescence](#)
- [Immunoprecipitation](#)
- [Flow Cytometry](#)
- [Cell Culture](#)

### RAB14 Antibody - Images



All lanes : Anti-RAB14 Antibody at 1:2000 dilution Lane 1: Hela whole cell lysate Lane 2: Raji

whole cell lysate Lane 3: human brain lysate Lysates/proteins at 20 µg per lane. Secondary Goat Anti-mouse IgG, (H+L), Peroxidase conjugated at 1/10000 dilution. Predicted band size : 24 kDa Blocking/Dilution buffer: 5% NFDM/TBST.

#### **RAB14 Antibody - Background**

Involved in membrane trafficking between the Golgi complex and endosomes during early embryonic development. Regulates the Golgi to endosome transport of FGFR-containing vesicles during early development, a key process for developing basement membrane and epiblast and primitive endoderm lineages during early postimplantation development. May act by modulating the kinesin KIF16B-cargo association to endosomes (By similarity). Regulates, together with its guanine nucleotide exchange factor DENND6A, the specific endocytic transport of ADAM10, N-cadherin/CDH2 shedding and cell-cell adhesion.

#### **RAB14 Antibody - References**

Proikas-Cezanne T.,et al.Submitted (MAY-1999) to the EMBL/GenBank/DDBJ databases.  
Ren Y.,et al.Submitted (NOV-1999) to the EMBL/GenBank/DDBJ databases.  
Huang Y.-P.,et al.Submitted (FEB-2004) to the EMBL/GenBank/DDBJ databases.  
Hu R.-M.,et al.Proc. Natl. Acad. Sci. U.S.A. 97:9543-9548(2000).  
Bechtel S.,et al.BMC Genomics 8:399-399(2007).